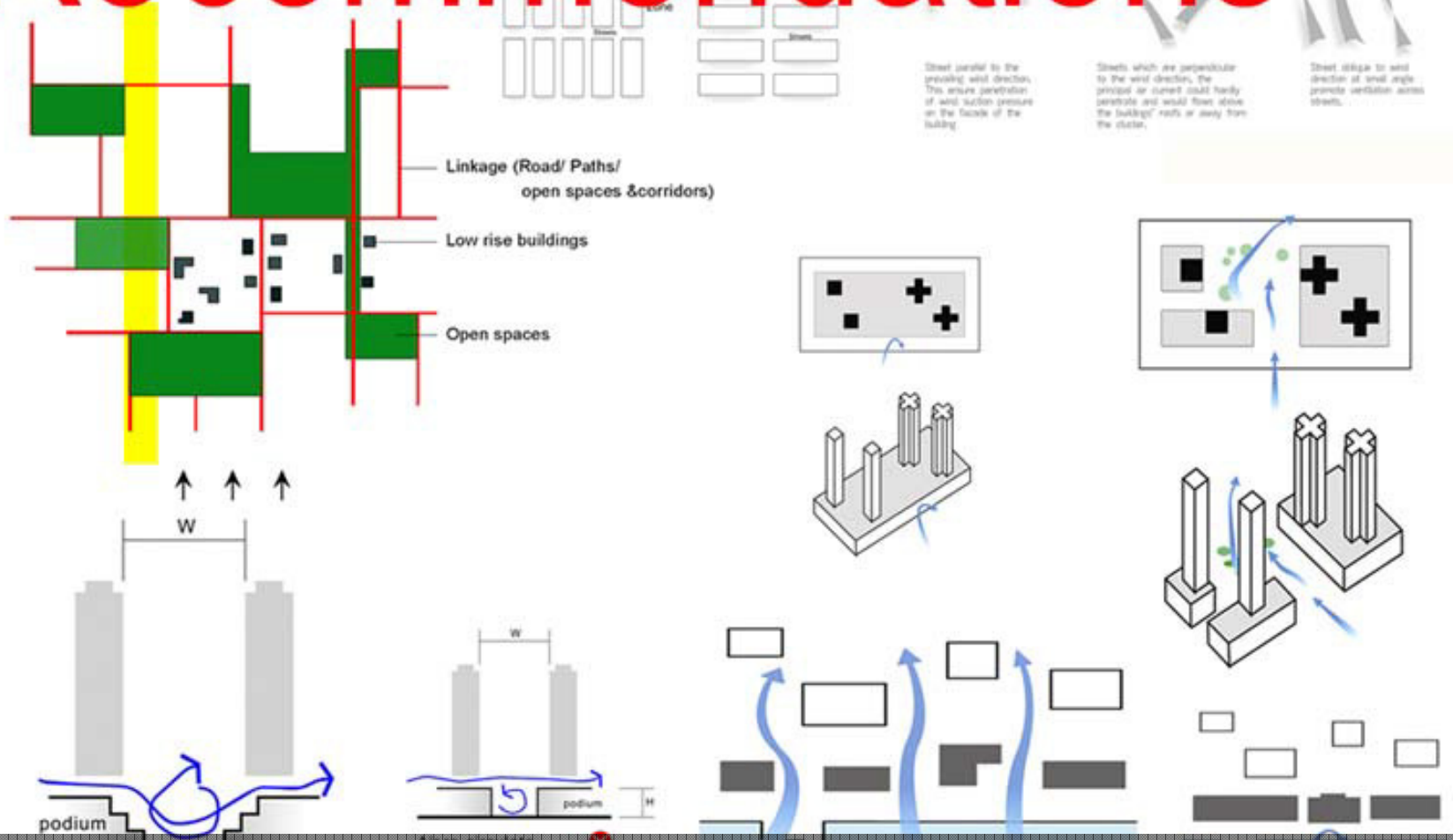


11 Promotes Ecological Literacy

Ecological literacy is the awareness in a population of the consequences of its behaviour and/or inaction towards its environment at large. A built environment, seeking to be sustainable, must factor in the degree of this awareness. It can conversely, through its design and interfaces, seek to promote it.

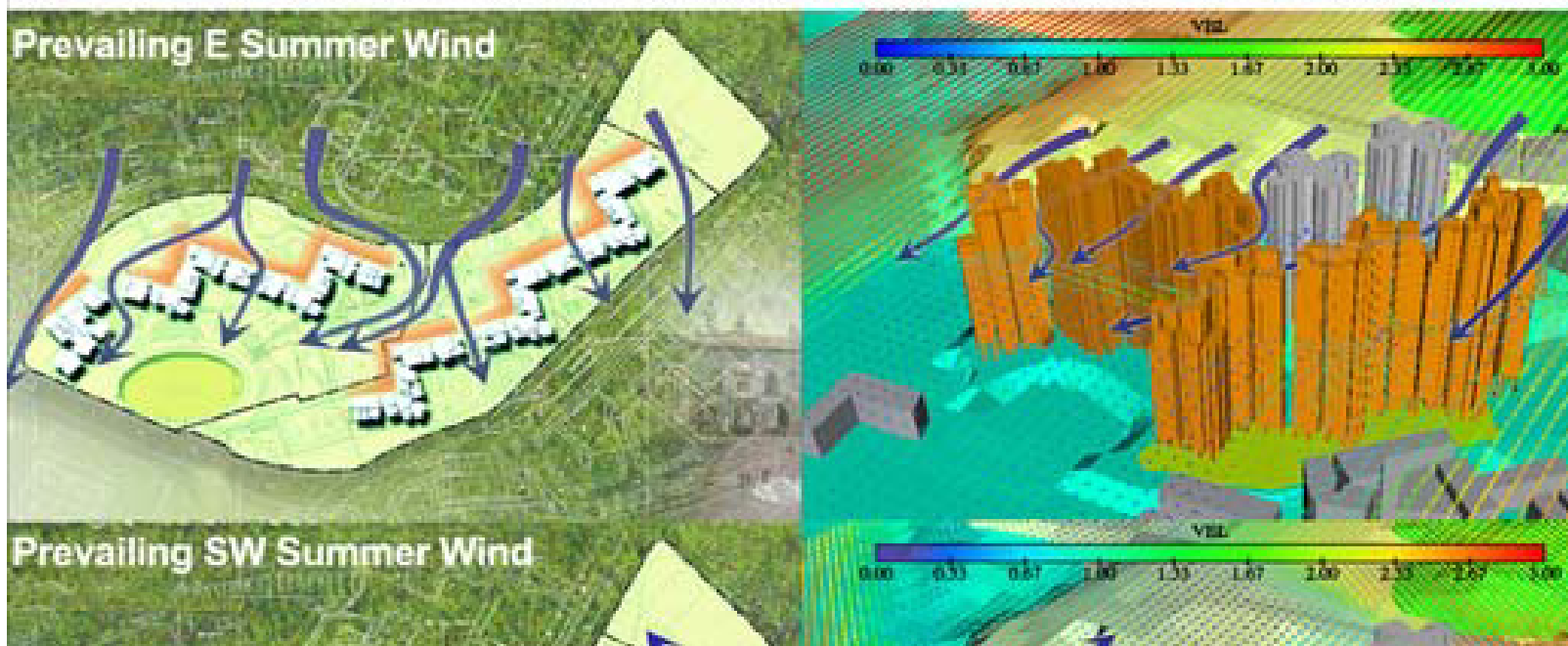
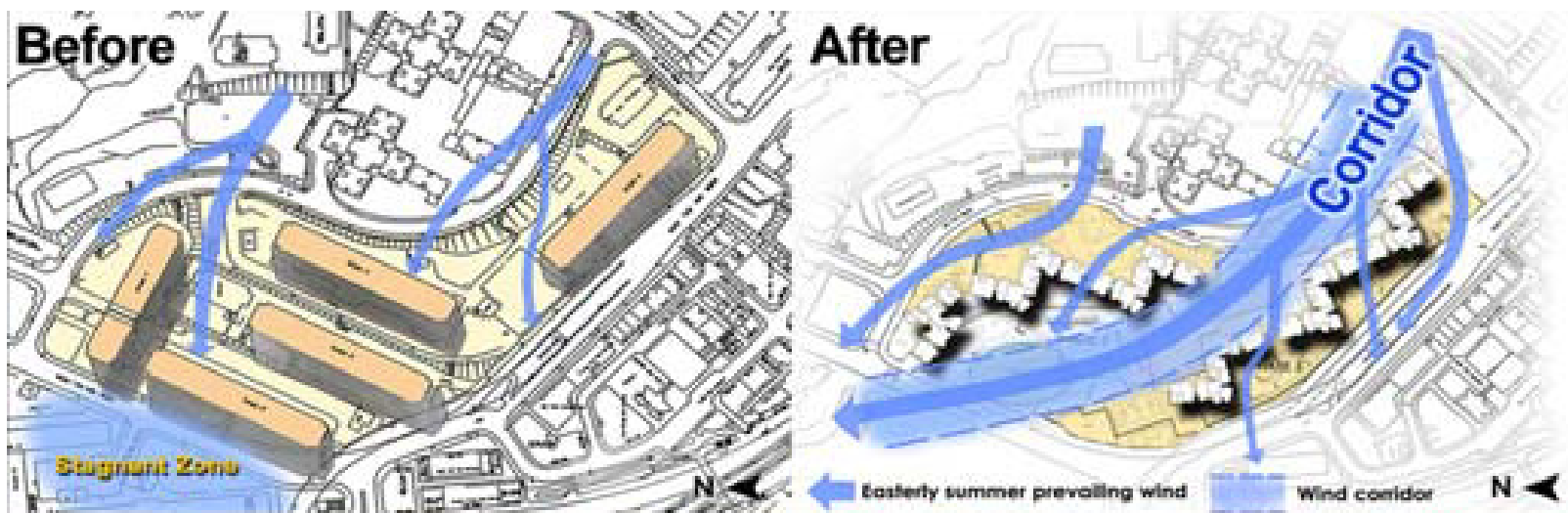
Recommendations



Feasibility Study for Establishment of Air Ventilation Assessment (AVA) System

Architect: Edward NG





Micro-climate Research Studies for Sustainable Public Housing Development

Architect: Development & Construction Division,
Housing Department, Hong Kong Special Admin
Region Government

Image Courtesy of: Hong Kong Institute of Architects





Khaadi Factory

Architect: ASA (Pvt) Ltd.



DRAFT

Sustainability Approach Matrix

Project Name / Location _____

Date _____

	Name of Attribute	Primary Role *	Secondary Role *	Not Applicable *	Remarks
1	Conservation of Natural Capital				
2	Resilient to Climate Change				
3	Reliant of Renewable Reserves				
4	Mindful of Reserve Management				
5	Progressed for Longevity/Adaptability/Revise				
6	Adopt "Sustainable Urbanism"				
7	Harmonies with Place				
8	Promotes wellness of inhabitants				
9	Adopts "Integrated Landscape"				
10	Adopts "Integrated Design Process"				
11	Promotes Ecological Literacy				
12					

* tick (✓) Appropriate Column

Copy for ☐ Client
☐ Consultants
☐ Site Staff
☐ Contractor
☐ Other



“PRACTICE VS PRACTISE: Sustainability at Crossroads”

THANK YOU

Ashvinkumar c/o SLA

